

2016

GENESEE YACHT CLUB

SAILING INSTRUCTIONS



2015 Genesee Yacht Club Sailing Instructions

Rules

- 1.1 All sailing will be governed by the rules as defined in the International Sailing Federation (ISAF) Racing Rules of Sailing (hereafter referred to as the RRS) and the APPENDIX T in the 2013-2016 US SAILING PRESCRIPTIONS (hereafter referred to as Appendix T) Sections A, B, and D.
- 1.2 These Sailing Instructions will govern the 2015 GYC Racing program except the Scotch Bonnet Light Race, Hospice Regatta, The Women's Sailing Invitational and the GYC Match Racing Program.

2 Notice to Competitors and Changes to the Sailing Instructions

- 2.1 Notices to competitors or changes to the Sailing Instructions will be posted on the Race Bulletin Board no later than 0900 on the day they will take effect, except that any change to the schedule of races will be posted no later than 2 hours before the scheduled race start.

3 Eligibility to Race

- 3.1 Members of Genesee Yacht Club shall be eligible to enter a boat in any club race and a member of the club must be aboard during the race. Other boats may enter with prior approval of the Rear Commodore or his/her delegate on a race by race basis.
- 3.2 The competitor shall submit a signed copy of the GYC Intention-to-Race Form; the boat must be listed on the fleet roster, and must have a valid PHRF Lake Ontario rating certificate prior to the race, to be scored. These requirements are waived for "Pizza" and "Fun" races.
- 3.3 Each boat shall carry at least 2 people except for designated single-handed events.

4 Schedule of Races

- 4.1 A Schedule of Races will be posted on the Race Bulletin board and the GYC website

5 Class Divisions and Flags (divisions will be posted on the race board by May 12th, 2015).

- 5.1 The Division flag shall be the numeral pennant as defined above.
- 5.2 The Single-Handed and Double-Handed series will be sailed non-spinnaker.
- 5.3 Boats must declare whether sailing in a spinnaker or non-spinnaker division on an "Intention to Race Form" prior to sailing a race in any series. The decision will remain in effect for that series.
- 5.4 Three boats shall constitute a fleet. However, even if only one boat of that fleet is on the starting line to race, that boat will be scored.

6 Equipment

- 6.1 Boats shall carry all equipment required by law.
- 6.2 Boats racing in a "One-Design" fleet or those boats issued a PHRF-LO ODR shall conform to the class rules except as may be amended in these sailing instructions. This is a change from RRS rule 87.
- 6.3 All boats must carry a working VHF marine radio capable of communication on channel 71. The signal boat will use VHF channel 71 if possible.
- 6.4 Boats may use only one headsail at a time except during changes.

7 Race Times

- 7.1 Tuesday night races will start at 1830 hours before September 1st and 1800 hours after and including September 1st.
- 7.2 Start time for Pizza races will be announced at a skippers meeting at 1800 on the day of the race.
- 7.3 Starting times for races held on weekends will be announced at a skippers meeting held at the GYC clubhouse at 0900 or posted on the race bulletin board by 0900 on the date of the race. Start time will be approximately 1000.

8 Race Location

- 8.1 The Starting Area will be approximately 1 mile north of the Rochester Light. In the event that RYC is running a race to the east of the Genesee River piers, the race course will be set so that the course and its lay lines are entirely to the west of the piers. Any other location will be posted on the race bulletin board, announced at the skippers meeting, or communicated by the signal boat via VHF channel 71.

9 Race Courses

- 9.1 The course to be sailed will be signaled by the signal boat as specified in Appendix A.
- 9.2 The course for Long Distance Races will be announced at the skippers meeting.
- 9.3 The race committee will attempt to set a course with a minimum one mile weather leg whenever possible.

10 Severe Weather

- 10.1 Lightning - The signal boat will abandon or postpone a race whenever lightning is observed in the vicinity of the race course (any lightning visible within the Rochester embayment or close onshore will be considered "in the vicinity"). Exceptions to this rule may be made for long distance races. The Rear Commodore or his announced designee may override any signal boat decision to start or continue racing.

11 Starting

- 11.1 Boats not Racing – While other boats are racing, boats that are not racing shall stay outside a rectangle defined by the line between the starting buoy and signal boat and extending 35 yards windward and 35 yards to leeward of that line. This is a change to RRS rule 23.1.
- 11.2 Starting Sequence – Divisions will start in numerical order (Division 1 first).
- 11.3 General Recalls – The starts for divisions with general recalls shall be moved to the end of the starting sequence. This is a change from RRS rule 29.2

12 Finishing

- 12.1 Boats must record their own start and finish times.

13 Time Limits

- 13.1 Course Races: Tuesdays – 2 hours (corrected time). Weekends – 2.5 hours (corrected time) with the exception of long distance races.
- 13.2 Other races – As posted on the race bulletin board or announced by the race committee at the skippers meeting.
- 13.3 Any boats not finishing within the time limit will be scored DNF. This is a change from RRS rule 35.
- 13.4 Light air conditions - If no boat is able to round the first mark of their course within one (1) hour of the first start, the race committee delegate in charge will abandon the race due to non-competitive wind conditions.

14 Collisions with other Boats

- 14.1 Exoneration by the "Two-Turn" Penalty is not guaranteed in the case of collisions. If, in the opinion of the Protest Committee, personal injury or serious damage could have resulted from the collision, one or more of the boats involved shall be disqualified from the race and may be disqualified from the entire series by action of the Rear Commodore and the Race Committee. This is a change from RRS rule 44.
- 14.2 A collision that causes damage or bodily injury **MUST** be protested by one or more of the boats involved.

15 Protests and Arbitration Meeting

- 15.1 Boats protesting must notify the signal boat prior to finishing or upon finishing that they intend to protest. This is an addition to RRS rule 61.
- 15.2 Written protests must be attached to the race committee bulletin board within two hours of the signal boat docking. It is also strongly encouraged to notify the Rear Commodore of the written protest.
- 15.3 Appendix T Section D provides for an Arbitration Meeting that can be used to resolve protests without a hearing. Please refer to the Section D for details on when and how this process can be used.
- 15.4 Protests will generally be heard on the first Monday following the date of the incident.

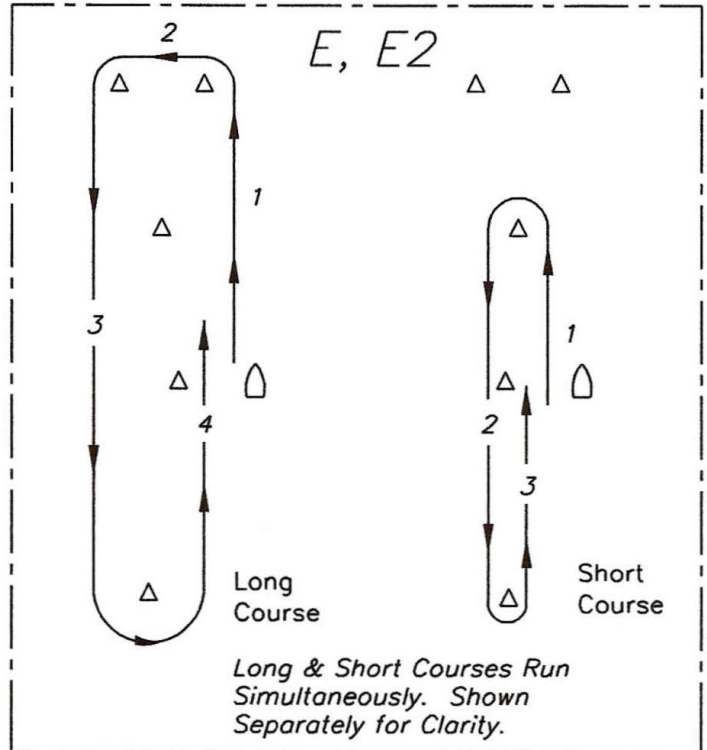
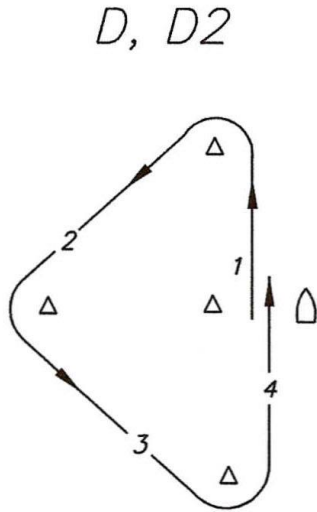
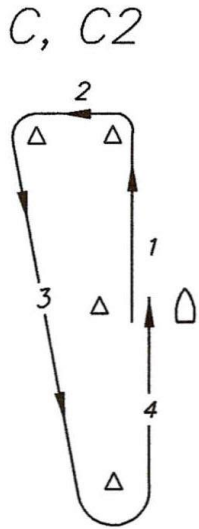
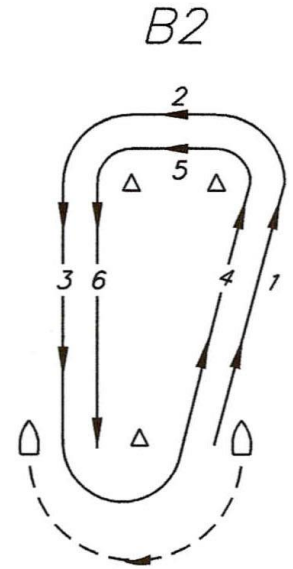
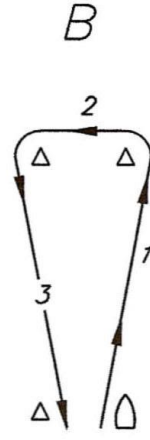
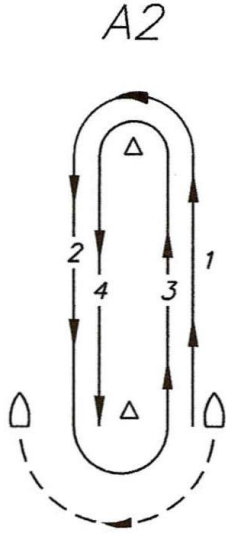
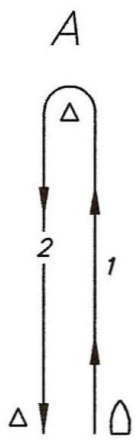
16 Scoring

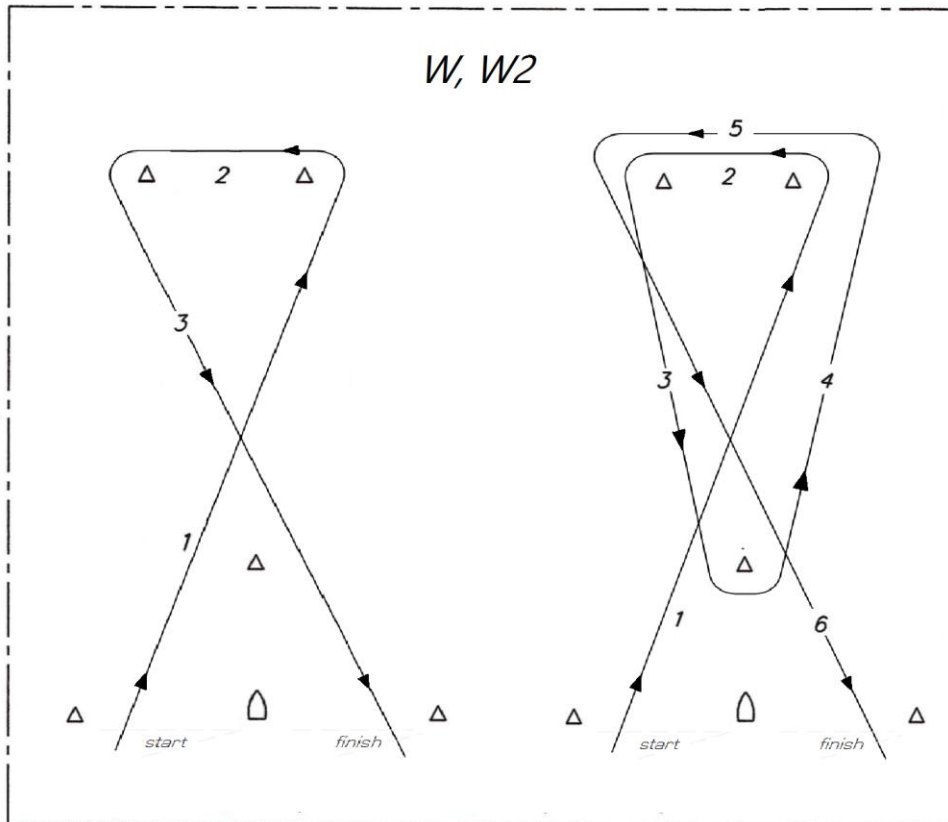
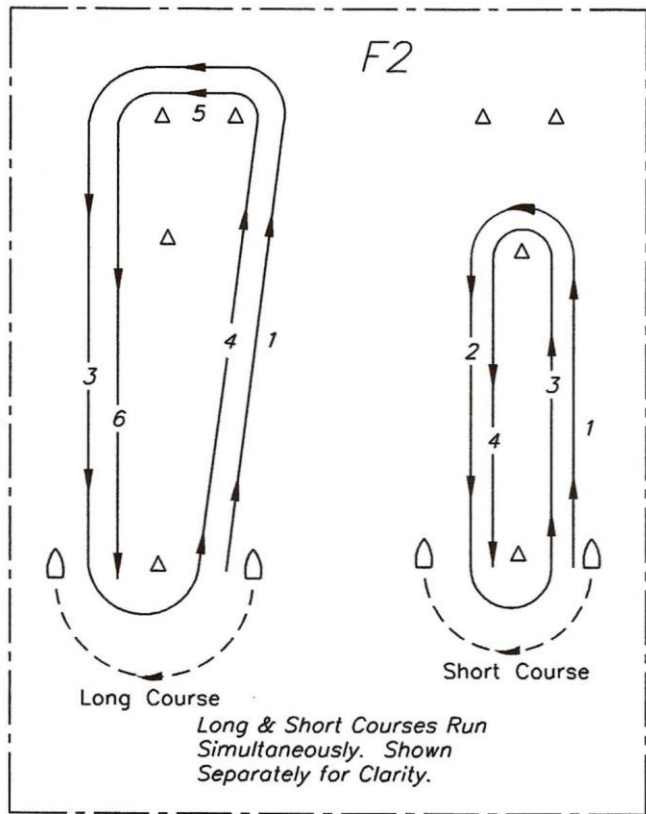
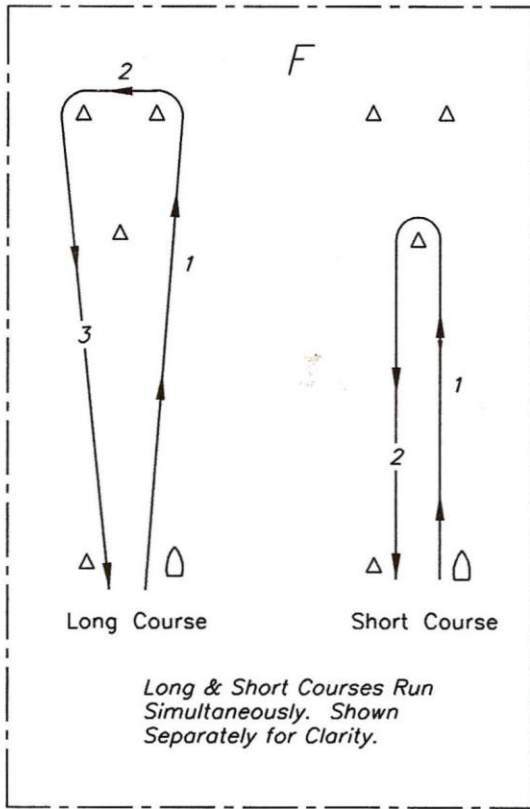
- 16.1 Finish times will be corrected using the PHRF-LO time on time method.
- 16.2 Resolving Ties
 - 16.2.1 Individual Race Ties: The tie shall stand, all boats tied receiving the points for that place. The remainder of the boats shall be awarded points as though the tie was resolved. This is a change from RRS rule A7.
 - 16.2.2 Series Ties: Ties shall be broken with RRS Rule 8.1A only (RRS rule A8.2 will not be used). This is a change from RRS rule A8.

17 Award Qualifications

- 17.1 A participant must be a GYC member at the end of the October membership meeting of the current year to receive an award.
- 17.2 To qualify for a series, a boat must sail in more than 1/2 the races completed in that series rounded to the next whole number. For example in a 2 or 3-race series, a boat would have to sail in two races to qualify; in a 4 or 5-race series, a boat would have to sail in three races to qualify; while in a 6 or 7-race series, a boat would have to sail in four races to qualify. This is a change from RRS rule A2.
- 17.3 **Series Championship** - Flags will be awarded to the top 3 places in each division having at least one boat qualifying in accordance with section 17.2. The best scores in the minimum number of races to qualify will be used. Ties will be broken by RRS rule 8.1A
- 17.4 **Tuesday Series Division Championships** – will be based on all Tuesday races for the year as a series, Tuesday division championship trophies will be awarded to the first place boat in each division having at least one boat qualifying in accordance with section 17.2. The best scores in the minimum number of races to qualify will be used. Ties will be broken by RRS rule 8.1A
- 17.5 **The Tuesday Night Overall Club Championship** - Based on all Tuesday races for the year as a series, the overall Tuesday Club Championship Trophy will be awarded to the first place spinnaker boat scoring all spinnaker divisions together as one division on corrected times. The best scores in the minimum number of races to qualify in accordance with section 17.2 will be used. Ties will be broken by RRS rule 8.1A
- 17.6 **Overall Division championships** - trophies will be awarded for each division with at least one boat qualifying in accordance with appendix B. The best scores in the minimum number of races to qualify in accordance with Appendix B will be used. Ties will be broken by RRS rule 8.1A.
- 17.7 **Boat of the Year** - The trophy will be awarded to the GYC spinnaker boat with the most first places in all GYC sponsored events and the Rochester Hospice Regatta excluding Pizza or “Fun” races. Ties will be broken by RRS rule 8.1A.

Appendix A – Courses





Appendix B – Flag & Trophy Events

Flag Events

Tuesday Night Spring – 1st, 2nd & 3rd
Tuesday Night Summer – 1st, 2nd & 3rd
Tuesday Night Fall – 1st, 2nd & 3rd
Spring Weekend Series – 1st, 2nd & 3rd
Double Handed Series – 1st, 2nd & 3rd
Fall Weekend Series – 1st, 2nd & 3rd
Long Distance Series – 1st, 2nd, & 3rd
Single Handed Race – 1st, 2nd & 3rd

Trophy Events

Tuesday Overall Fleet Champ – by fleet
Tuesday Night Overall Champion
All Event Fleet Champion
Double Handed Series – GO & Spin
Weekend Series – GO & Spin
Long Distance Champion – GO & Spin
Most Improved – GO & Spin
Boat of the Year
Sportsman Award

Appendix C – Fleet Championships

Category 1

Tuesday Night Series

Category 2

Long Distance Series
Scotch Bonnet
WSI

Category 3

Single Handed Race
Spring Weekend Series
Double Handed Series
Fall Weekend Series

Qualifications for all divisions:

To qualify for a Fleet Championship, a boat must have been scored in a minimum of: 5 less than the total number of Category 1 races for the division and 8 Category 2 or 3 races

Fleet Championships will be based on the combined best scores of the minimum number of races in each category required to qualify for a fleet championship. Spinnaker fleet boats cannot count a race sailed in the non-spinnaker fleet if a spinnaker fleet is available for that race.