

GENESEE YACHT CLUB

2010

SAILING INSTRUCTIONS



Photo used by permission of Lifetime Care

1 Rules

- 1.1 All sailing will be governed by the rules as defined in the International Sailing Federation (ISAF) Racing Rules of Sailing hereafter referred to as the *RRS*.
- 1.2 These Sailing Instructions will govern the 2010 GYC Racing program except the Scotch Bonnet Light Race, Hospice Regatta, and The Women's Sailing Invitational.

2 Notice to Competitors and Changes to the Sailing Instructions

- 2.1 Notices to competitors or changes to the Sailing Instructions will be posted on the Race Bulletin Board no later than 0900 on the day they will take effect, except that any change to the schedule of races will be posted no later than 2 hours before the scheduled race start.

2010 Genesee Yacht Club Sailing Instructions

3 Eligibility to Race

- 3.1 Members of Genesee Yacht Club shall be eligible to enter a boat in any club race. Other boats may enter with prior approval of the Rear Commodore or his/her delegate.
- 3.2 The competitor shall submit a signed copy of the GYC Intention-to-Race Form, the boat must be listed on the fleet roster, and must have a valid PHRF Lake Ontario rating certificate prior to the race, to be scored. These requirements are waived for "Pizza" and "Fun" races.
- 3.3 Each boat shall carry at least 2 people except for designated single-handed events.

4 Schedule of Races

- 4.1 A Schedule of Races will be posted on the Race Bulletin board and the GYC website

5 Class Divisions and Flags (preliminary)

- 5.1 Tuesday Night Only - There will be seven fleets starting in four divisions
 - 5.1.1 Division 1- Non-Spinnaker - Numeral Pennant 1
 - 5.1.2 Division 2-E Spinnaker SP 178 & higher - Numeral Pennant 2
 - 5.1.3 Division 3-D Spinnaker – C&C 29-1 - Numeral Pennant 3
 - 5.1.4 Division 3-C Spinnaker SP 166 to 177 - Numeral Pennant 3
 - 5.1.5 Division 4-B Spinnaker SP 118 to 165 - Numeral Pennant 4
 - 5.1.6 Division 4–A Spinnaker SP 117 and less - Numeral Pennant 4
- 5.2 Double-Handed, and Single Handed - There will be 3 divisions.
 - 5.2.1 Division 1 – Non-Spinnaker SP 200 and greater - Numeral Pennant 1
 - 5.2.2 Division 2 – Non-Spinnaker SP 166 to 199 - Numeral Pennant 2
 - 5.2.3 Division 3 – Non- Spinnaker SP 165 and less - Numeral Pennant 3
- 5.3 Weekend, Fall Weekend, Long Distance and Regattas - There will be 3 divisions
 - 5.3.1 Division 1 – Non-Spinnaker (all) - Numeral Pennant 1
 - 5.3.2 Division 2 – Spinnaker - SP 165 and greater - Numeral Pennant 2

2010 Genesee Yacht Club Sailing Instructions

5.3.3 Division 3 – Spinnaker –SP 164 and less - Numeral Pennant 3

- 5.4 The Division flag shall be the numeral pennant as defined above.
- 5.5 The Double-Handed and Single-Handed series will be sailed non-spinnaker.
- 5.6 Boats must declare whether sailing in a spinnaker or non-spinnaker division on an “Intention to Race Form” prior to sailing a race in any series. The decision will remain in effect for that series.
- 5.7 Three boats shall constitute a fleet. However, even if only one boat of that fleet is on the starting line to race, that boat will be scored.

6 Equipment

- 6.1 Boats shall carry all equipment required by law.
- 6.2 Boats racing in a “One-Design” fleet or those boats issued a PHRF-LO ODR shall conform to the class rules except as may be amended in these sailing instructions. This is a change from *RRS rule 87*.
- 6.3 All boats must carry a working VHF marine radio capable of communication on channel 71. The signal boat will use VHF channel 71 if possible.
- 6.4 Boats may use only one headsail at a time except during changes.

7 Race Times

- 7.1 Tuesday night races will start at 1830 hours before September 1st and 1800 hours after and including September 1st.
- 7.2 Start time for Pizza races will be announced at a skippers meeting at 1800 on the day of the race.
- 7.3 Starting times for races held on weekends will be announced at a skippers meeting held at the GYC clubhouse at 0900 or posted on the race bulletin board by 0900 on the date of the race. Start time will be approximately 1000.

8 Race Location

- 8.1 The Starting Area will be approximately 1 mile north of the Rochester Light. Any other location will be posted on the race bulletin board, announced at the skippers meeting, or communicated by the signal boat via VHF channel 71.

9 Race Courses

- 9.1 The course to be sailed will be signaled by the signal boat as specified in Appendix A
- 9.2 The course for Long Distance Races will be announced at the skippers meeting.

10 Severe Weather

- 10.1 Heavy Weather – In heavy weather conditions a special heavy weather course may be sailed. This will be announced by the race committee at the skippers meeting or via VHF radio by the signal boat as soon as possible.
- 10.2 Lightning - The signal boat will abandon or postpone a race whenever lightning is observed in the vicinity of the race course (any lightning visible within the Rochester embayment or close onshore will be considered "in the vicinity"). Exceptions to this rule may be made for long distance races. The Rear Commodore or his announced designee may override any signal boat decision to start or continue racing.

11 Starting

- 11.1 Boats not Racing – While other boats are racing, boats that are not racing shall stay outside a rectangle defined by the line between the starting buoy and signal boat and extending 35 yards to windward and 35 yards to leeward of that line. This is a change to *RRS rule 23.1*.
- 11.2 Starting Sequence – Divisions will start in numerical order (Division 1 first).
- 11.3 General Recalls – The starts for divisions with general recalls shall be moved to the end of the starting sequence. This is a change from *RRS rule 29.2*

12 Finishing

- 12.1 Boats must record their own start and finish times.

13 Time Limits

- 13.1 Course Races: Tuesdays – 2 hours (corrected time).
Weekends – 2.5 hours (corrected time)
- 13.2 Other races – As posted on the race bulletin board or announced by the race committee at the skippers meeting.
- 13.3 Any boats not finishing within the time limit will be scored DNF. This is a change from *RRS rule 35*.

14 Collisions with other Boats

- 14.1 Exoneration by the "Two-Turn" Penalty is not guaranteed in the case of collisions. If, in the opinion of the Protest Committee, personal injury or serious damage could have resulted from the collision, one or more of the boats involved shall be disqualified from the race and may be disqualified from the entire series by action of the Rear Commodore and the Race Committee. This is a change from *RRS rule 44*.
- 14.2 A collision that causes damage or bodily injury must be protested by one or more of the boats involved.

15 Protests

- 15.1 Protests will generally be heard on the first Monday following the date of the incident.
- 15.2 Written protests must be attached to the race committee bulletin board within two hours of the signal boat docking.
- 15.3 Boats protesting must notify the signal boat or the Rear Commodore upon finishing that they intend to protest. This is an addition to *RRS rule 61*.

16 Scoring

- 16.1 Finish times will be corrected using the PHRF-LO time on time method.
- 16.2 Resolving Ties
 - 16.2.1 Individual Race Ties: The tie shall stand, all boats tied receiving the points for that place. The remainder of the boats shall be awarded points as though the tie was resolved. This is a change from *RRS rule A7*.
 - 16.2.2 Series Ties: Ties shall be broken with *RRS Rule 8.1* only (*RRS rule A8.2* will not be used). This is a change from *RRS rule A8*.

17 Award Qualifications

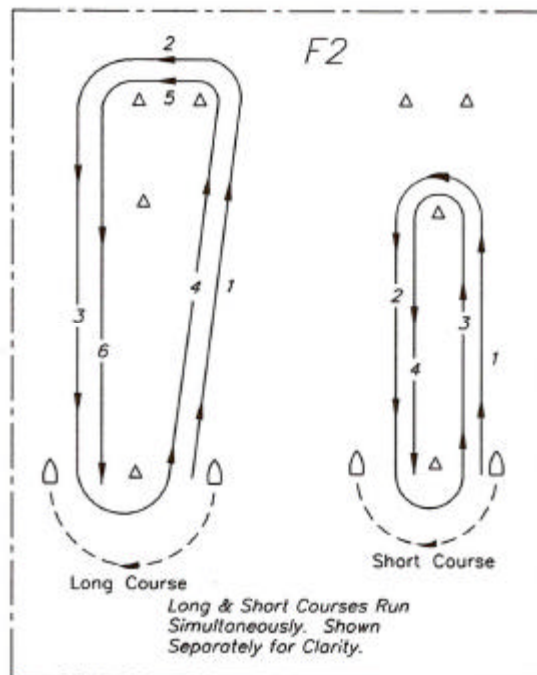
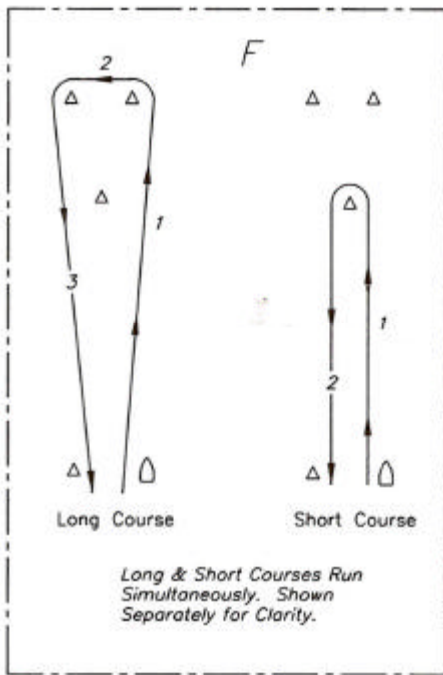
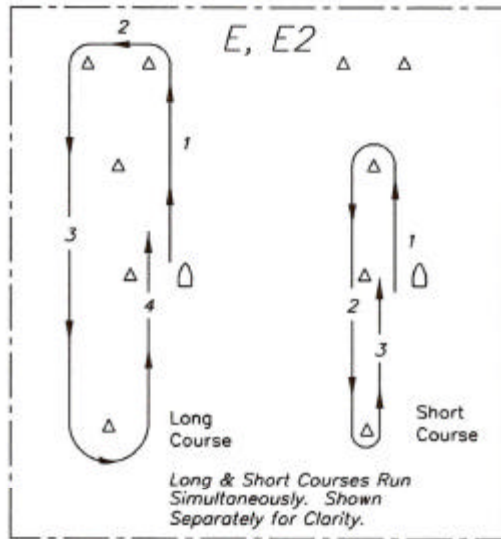
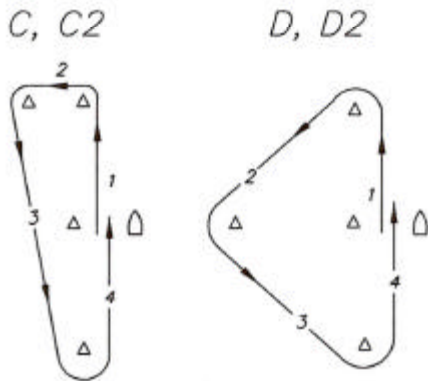
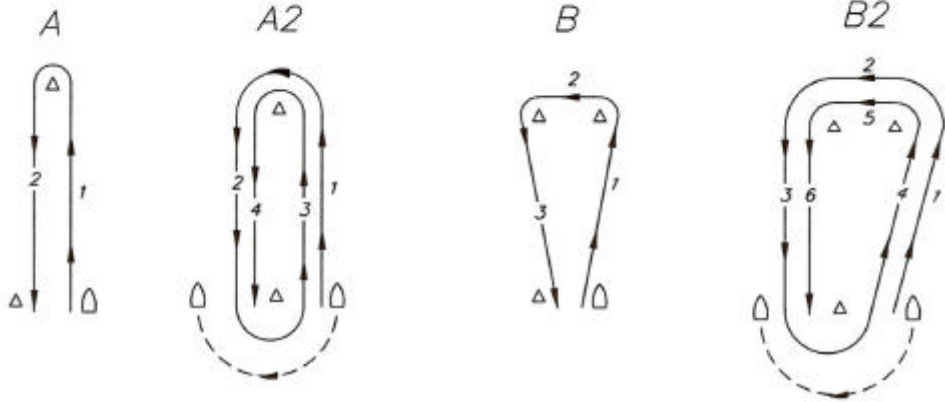
- 17.1 A participant must be a GYC member at the end of the November membership meeting of the current year to receive an award.
- 17.2 To qualify for a series, a boat must sail in more than 1/2 the races completed in that series, rounded to the next whole number. For example in a 2 or 3-race series, a boat would have to sail in two races to qualify; in a 4 or 5-race series, a boat would have to sail in three races to qualify; while in a 6 or 7-race series, a boat would have to sail in four races to qualify. This is a change from *RRS rule A2*.
- 17.3 Series Championship - For each series, a boat's score will be calculated as the combined scores of the minimum number of races required to qualify for that series. The total number of DSQ scores allowed as throw-outs per series is one. This is a change from *RRS rule 90.3 b*.
- 17.4 Fleet Championships will be awarded for every fleet that has at least one boat qualifying in accordance with Appendix B.
- 17.5 The Tuesday Night Overall Club Championship will be awarded to the boat with the greatest number of first place finishes in the Tuesday night series. Ties will be broken per *RRS rule 8.1*.

2010 Genesee Yacht Club Sailing Instructions

- 17.6 Boat of the Year will be awarded to the boat with the most first places for all GYC sponsored events and the Rochester Hospice Regatta but not including Pizza or “Fun” races. Ties will be broken per *RRS rule 8.1*.

2010 Genesee Yacht Club Sailing Instructions

Appendix A – Courses



2010 Genesee Yacht Club Sailing Instructions

Appendix B – Fleet Championships

Category 1
Tuesday Night Series

Category 2
Scotch Bonnet
Long Distance Series

Category 3
Weekend Series
Double Handed Series
Single Handed Race
Regatta Series
Fall Weekend Series

Qualifications for all divisions:

To qualify for a Fleet Championship, a boat must have been scored in a minimum of:

5 less than the total number of Category 1 races for the division
8 Category 2 or 3 races

Fleet Championships will be based on the combined best scores of the minimum number of races in each category required to qualify for a fleet championship. Spinnaker fleet boats cannot count a race sailed in the non-spinnaker fleet if a spinnaker fleet is available for that race.

Appendix C – Attachment “Z” for Arbitration

SI Attachment Z, AFTER INCIDENT SCORING PENALTIES AND PROTEST ARBITRATION, will be in effect.

SI ATTACHMENT Z – AFTER INCIDENT SCORING PENALTY AND PROTEST ARBITRATION

After Incident Scoring Penalty

A boat that may have broken a rule of Part 2 or rule 31 while racing may take a penalty after she is no longer racing and prior to the start of a protest hearing involving the incident. Her penalty shall be a Scoring Penalty of 40% calculated as described in *RRS rule 44.3(c)*, unless the sailing instructions state a different penalty. However, if she caused injury or serious damage or gained a significant advantage in the race or series by her breach, her penalty shall be to retire. This adds to *RRS rule 44*.

Protest Arbitration Process

- (a) An arbitration meeting will be held prior to a protest hearing for each incident resulting in a protest involving a rule of Part 2 or rule 31, unless the arbitrator deems the incident inappropriate for arbitration. One representative of each party, who was on board at the time of the incident, will meet with the arbitrator. If all the parties to a protest are not represented, the arbitration meeting shall not be held. No witnesses will be permitted.
- (b) After hearing the testimony, the arbitrator will offer one of the following opinions:
 - (1) The protest committee would find the protest to be invalid. The arbitrator will allow the protestor to withdraw the *protest*.
 - (2) The protest committee would find that no boat broke a *rule*. The arbitrator will allow the protestor to withdraw the *protest*.
 - (3) The protest committee would find that one or more boats represented in the arbitration meeting broke a rule of Part 2 or rule 31. The arbitrator will offer each of those boats the option to accept an After-Race Scoring Penalty, or to retire. The arbitrator will allow the protestor to withdraw the protest.
 - (4) A protest hearing is appropriate.
- (c) The protest committee will schedule a protest hearing for any protests that are not withdrawn. Any boat that accepted an After-Race Scoring Penalty will not be penalized further as a result of the protest hearing, unless the protest committee concludes that the boat caused injury or serious damage, gained a significant advantage in the race or series, or broke a rule other than a rule of Part 2 or rule 31.
- (d) If a protest is withdrawn, no protest hearing will be held; and the protest cannot be the subject of a request for redress or appeal.
- (e) Following an arbitration meeting, the arbitrator of that meeting may allow the protest to be withdrawn. This changes *RRS rule 63.1*.