



The Organizing Authority is the Genesee Yacht Club (GYC)

Genesee Yacht Club
10 Marina Dr.
Rochester, NY 14612
www.geneseeyc.org

Sailing Instructions May 1, 2019



1. RULES

- 1.1. GYC races will be governed by the rules as defined in *The Racing Rules of Sailing*.
- 1.2. Appendix T (Arbitration) will apply.
- 1.3. The Class Rules PHRF – LO(Lake Ontario) shall apply.

2. ENTRIES

- 2.1. Members of Genesee Yacht Club, in good standing, will be eligible to enter a boat in any club race and a member of the club must be aboard during the race. Other boats may enter with prior approval of the Rear Commodore or his/her delegate on a race by race basis.
- 2.2. Competitors may enter by completing an Intention to Race form, Appendix A of the Notice of Race.
- 2.3. The competitor shall have a valid PHRF Lake Ontario rating certificate prior to the race to be scored.
- 2.4. Requirement 2.2 and 2.3 are waived for “Pizza” and “Fun” races.

3. NOTICE TO COMPETITORS

- 3.1. Notices to competitors will be posted on the official racing notice board located in the GYC clubhouse.

4. CHANGES TO THE SAILING INSTRUCTIONS

- 4.1. Any changes to the sailing instructions will be posted before 0900 on the day it will take effect, except that any change to the schedule of races will be posted by 2000 on the day before it takes effect.

5. SIGNALS MADE ASHORE

- 5.1. Signals made ashore will be displayed at the GYC flagpole.
- 5.2. When flag AP is displayed ashore ‘1 minute’ is replaced by ‘not less than 60 minutes’ in the race signal AP.

6. SCHEDULE OF RACES

- 6.1. The schedule of races is listed in Appendix C.

7. CLASS FLAGS

- 7.1. Class flags will be the numeral signal pennant corresponding to a boats division number.

8. RACING AREA

8.1. The starting line will be approximately 1 nm 000 deg from the Rochester pier west light.

9. THE COURSES

9.1. The courses are shown in Appendix A.

10. MARKS

10.1. Marks will be inflatable tetrahedrons, buoy balls and cylinders based on conditions and equipment available.

11. THE START

11.1. The starting line will be between a staff displaying an orange flag on the signal boat at the starboard end and an inflatable mark at the port end.

11.2. The race committee will attempt to announce, by VHF radio, sail numbers or boat names observed to be OCS (prematurely starting race) at the starting signal. Failure of the race committee to make such announcements, or of a boat to hear it, the timing or sequence will not be grounds for a request for redress. This changes RRS 62.1 (a).

12. CHANGE OF THE NEXT LEG OF THE COURSE

12.1. To change the next leg of the course, the race committee will move the original mark (or move the finishing line) and remove the original mark as soon as practicable.

13. THE FINISH

13.1. The finishing line will be between a staff displaying an orange flag on the signal boat and a nearby inflatable mark.

13.2. All boats shall take their GPS time at the finish line for verification of general position. A discrepancy between RC time and boats time will not be grounds for redress.

14. TIME LIMITS AND TARGET TIMES

14.1. Each boats time limit will be 2 hours corrected, with the exception of long distance series races. Time limits for long distance series races is at the discretion of the race committee.

14.2. If no boat reaches the first mark within 1 hour, the race shall be abandoned, with the exception of long distance series races

14.3. Boats failing to finish within the Finishing Window shall be scored Did Not Finish without a hearing. This changes RRS 35, A4 and A5.

15. RADIO COMMUNICATION

15.1. All boats must carry a working VHF radios tuned to channel 71. Further a functioning hand-held backup radio or functioning cell phone is required.

16. PRIZES

16.1. Prizes are described in Appendix B.

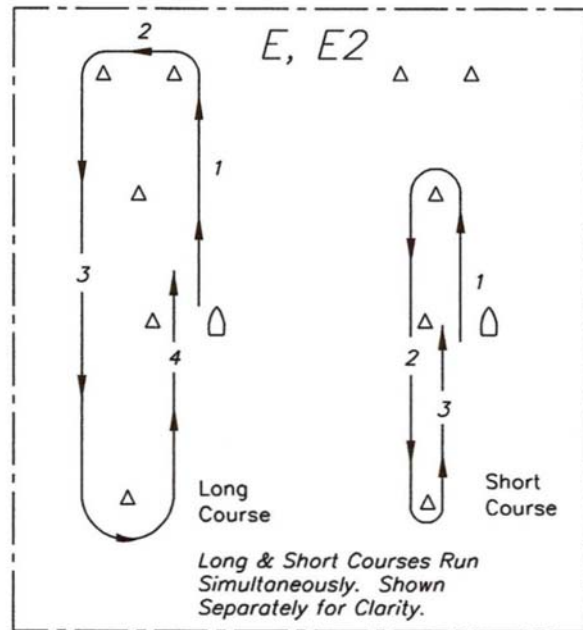
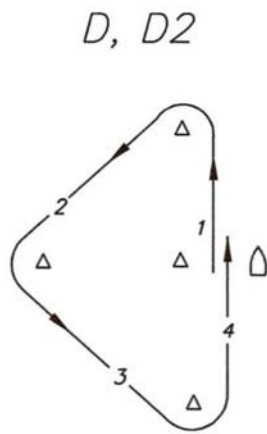
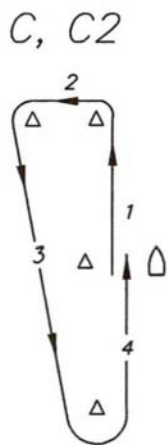
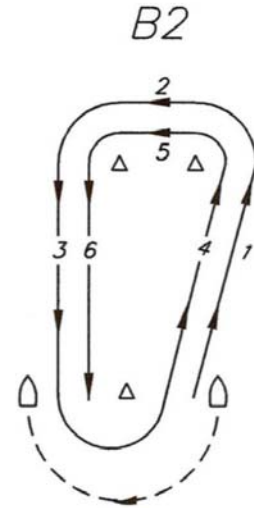
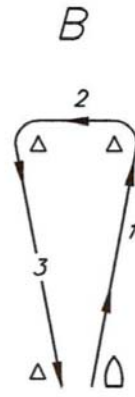
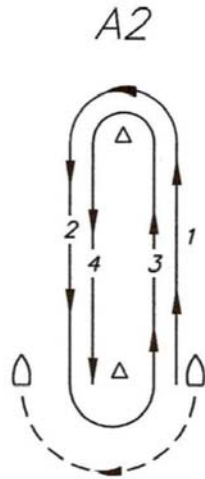
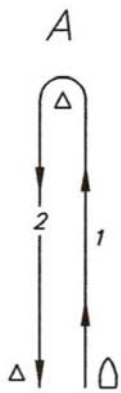
17. DISCLAIMER OF LIABILITY

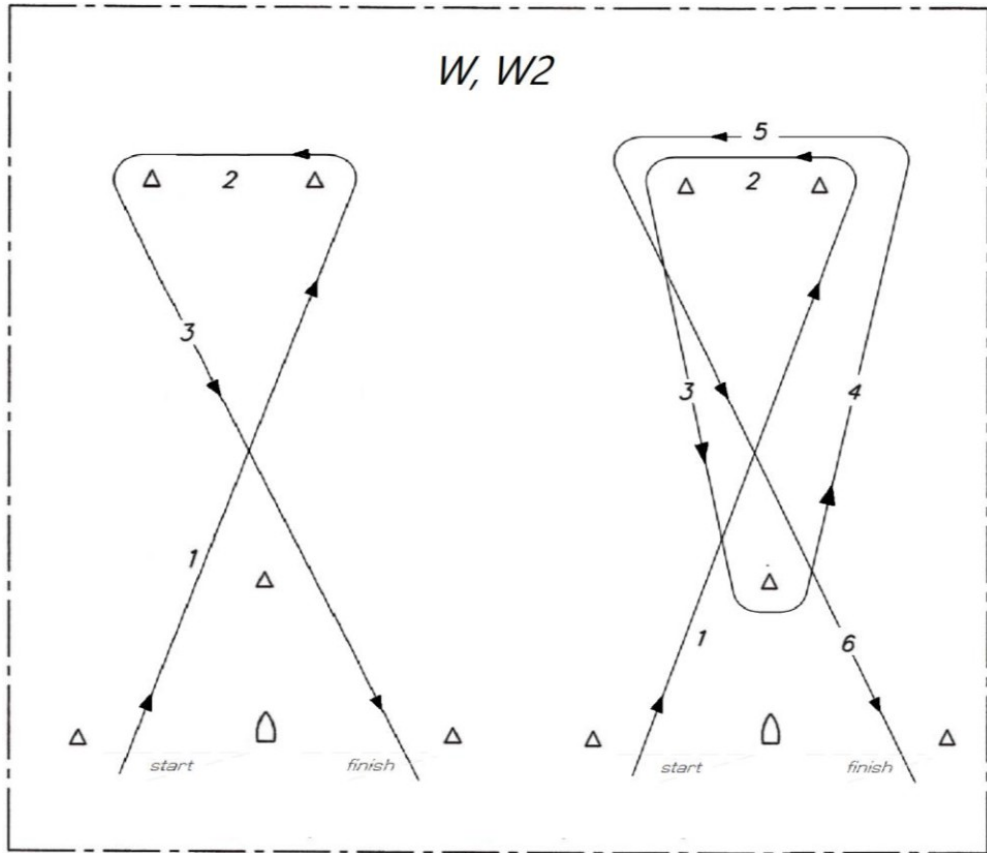
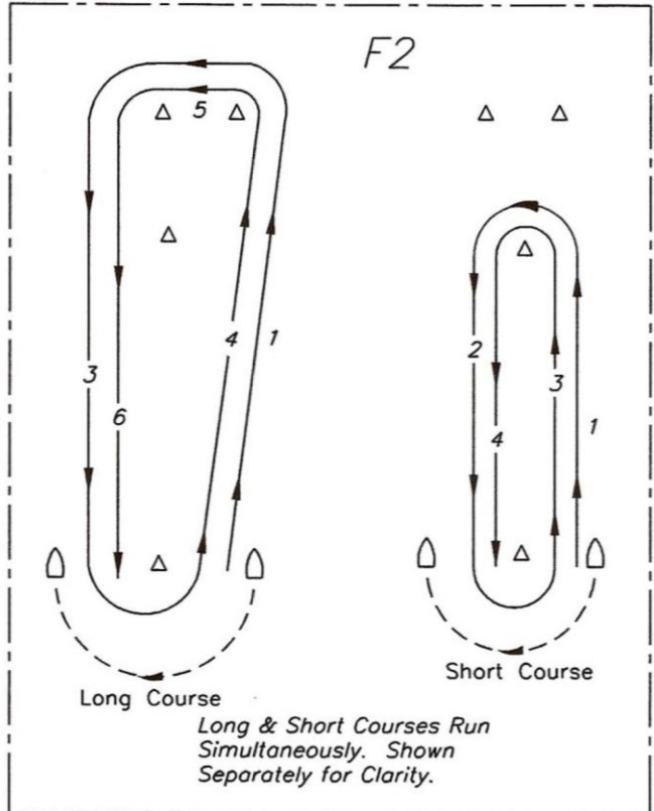
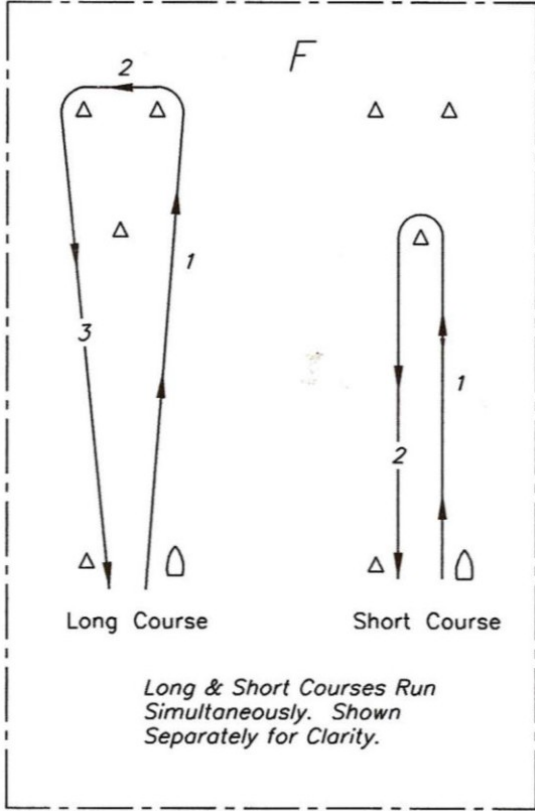
17.1. Competitors participate in the regatta entirely at their own risk. See RRS 4, Decision to Race. The organizing authority will not accept any liability for material damage or personal injury or death sustained in conjunction with or prior to, during, or after the regatta.

18. INSURANCE

18.1. Each participating boat shall be insured with valid third-party liability insurance with a minimum cover of \$300,000USD per incident.

APPENDIX A – RACE COURSES





APPENDIX B – PRIZES

1. SERIES CHAMPIONSHIP

- 1.1.** Flags will be awarded to the top 3 places in each division. Only the scores for non-excluded races will be used.

2. TUESDAY SERIES DIVISION CHAMPIONSHIPS

- 2.1.** Trophies will be based on all Tuesday races for the year as a series, Tuesday division championship trophies will be awarded to the first-place boat.
- 2.2.** Only the scores for non-excluded races will be used.

3. TUESDAY NIGHT OVERALL CHAMPIONSHIP

- 3.1.** Trophies will be based on all Tuesday races for the year as a series, the overall Tuesday Club Championship Trophy will be awarded to the first-place spinnaker boat scoring all spinnaker divisions together as one division on corrected times.
- 3.2.** Only the scores for non-excluded races will be used.

4. DIVISION CHAMPIONSHIPS

- 4.1.** Overall trophies will be awarded for each Tuesday night division.
- 4.2.** The best modified high point ~~non-excluded~~ scores will be used.
- 4.3.** Races to Count: The series will consist of races within the following series:
 1. Spring Tuesday Series
 2. Summer Tuesday Series
 3. Fall Tuesday Series
 4. Spring Weekend Series
 5. Double Handed Series
 6. Fall Weekend Series

Appendix B – Prizes (continued)

- 7. Single Handed Race
- 8. Long Distance Series
- 9. Fall Weekend Regatta

4.4. Race Scores will be determined following a modified high point scoring system as follows:

- 4.4.1. Define 'N' to be the number of boats that compete in a particular race.
- 4.4.2. Define P as the place assigned by low point scoring.
- 4.4.3. Each boat who comes to the starting line will be scored as follows:

$$(N+1-P)/N$$

For example,

$$1^{st} \text{ place finish: } (N+1-P)/N (=1.0)$$

Each place thereafter receives a smaller fraction score.

The last place boat who completed the course will have a score greater than zero.

A boat which DNS, DNF or was DSQ will receive a score of 0 by this formula.

Boats that do not compete in that race (DNC) will not be scored.

Example scores:

boats (N) = 3	
Place Finish	High Point Score
1	1.00
2	0.67
3	0.33

boats (N) = 5	
Place Finish	High Point Score
1	1.00
2	0.80
3	0.60
4	0.40
5	0.20

boats (N) = 7	
Place Finish	High Point Score
1	1.00
2	0.86
3	0.71
4	0.57
5	0.43
6	0.29
7	0.14

boats (N) = 9	
Place Finish	High Point Score
1	1.00
2	0.89
3	0.78
4	0.67
5	0.56
6	0.44
7	0.33
8	0.22
9	0.11

Appendix B – Prizes (continued)

4.5. The series score for each boat will be a summation of the modified high point score for all races within qualifying series. ~~except for races excluded by table in Section 8, EXCLUSION TABLE.~~

5. BOAT OF THE YEAR

5.1. The trophy will be awarded to the GYC spinnaker boat with the most first places in all GYC sponsored events excluding Pizza or “Fun” races.

5.2. The Races included in this determination are:

1. Spring Tuesday Series
2. Summer Tuesday Series
3. Fall Tuesday Series
4. Spring Weekend Series
5. Double Handed Series
6. Fall Weekend Series
7. Single Handed Race
8. Long Distance Series
9. Fall Weekend Regatta

6. DOUBLE-HANDED SERIES TROPHY

6.1. Based on all Double-Handed races for the year as a series, the overall Double-Handed Series Championship Trophy will be awarded to the first place boat scoring all divisions together as one division on corrected times. Only the scores for non-excluded races will be used.

Appendix B – Prizes (continued)

7. SINGLE HANDED RACE TROPHY

7.1. The overall Single-Handed Race Championship Trophy will be awarded to the first place boat scoring all divisions together as one division on corrected times.

8. EXCLUSION TABLE

8.1. Series exclusions will be based on the following table:

Number of Races	Number of Excluded Races
1	0
2	0
3	1
4	1
5	1
6	1
7	2
8	2
9	2
10	3
11	3
12	3
More than 12	4

Appendix C – Schedule of Races

1. Spring Tuesday Series
 - 1.1. Dates: 6/4, 6/11, 6/18, 6/25, 7/2
 - 1.2. First start time: 1830, rolling 5-minute starts
 - 1.3. VHF radio competitors announcement approximately 5 minutes before the first scheduled start
2. Summer Tuesday Series
 - 2.1. Dates: 7/9, 7/16, 7/23, 7/30, 8/6, 8/13
 - 2.2. First start time: 1830, rolling 5-minute starts
 - 2.3. VHF radio competitors announcement approximately 5 minutes before the first scheduled start
3. Fall Tuesday Series
 - 3.1. Dates: 8/20, 8/27, 9/3, 9/10, 9/17
 - 3.2. First Start August races: 1830, rolling 5-minute starts
 - 3.3. First Start September races: 1800, rolling 5 minute starts
 - 3.4. VHF radio competitors announcement approximately 5 minutes before the first scheduled start
4. Spring Weekend Series
 - 4.1. Dates: 5/25, 6/8, 6/15, Note 6/29 conflicts with SBYC Challenge Cup
 - 4.2. Number of Races: 2 per day
 - 4.3. First Start: 1000
 - 4.4. Skippers meeting 0900
5. Double Handed Series
 - 5.1. Dates: 7/6, 7/27, 8/10
 - 5.2. Number of Races: 2 per day

- 5.3. First Start: 1000
- 5.4. Skippers meeting at 0900
- 5.5. Number of crew: boats less than 30' 2, boats 30' or greater may have 2 or 3 crew.
- 6. Fall Weekend Series
 - 6.1. Dates: 9/7, 9/21, 9/28
 - 6.2. Number of Races: 2 per day
 - 6.3. First Start: 1000
 - 6.4. Skippers meeting at 0900
- 7. Single Handed Race
 - 7.1. Date: 8/24
 - 7.2. Number of Races: one
 - 7.3. First Start: 1000
 - 7.4. Skippers Meeting: 0900
- 8. Long Distance Series
 - 8.1. Dates: 6/1, 7/13, 8/31
 - 8.2. Number of races: 1 per day
 - 8.3. First Start: 1000
 - 8.4. Skippers Meeting: 0900
- 9. Fall Weekend Regatta
 - 9.1. Date: 10/5
 - 9.2. Number of Races: 3
 - 9.3. First Start: 1000
 - 9.4. Skippers Meeting: 0900,
 - 9.5. Latest time for warning signal of last race: 1300